

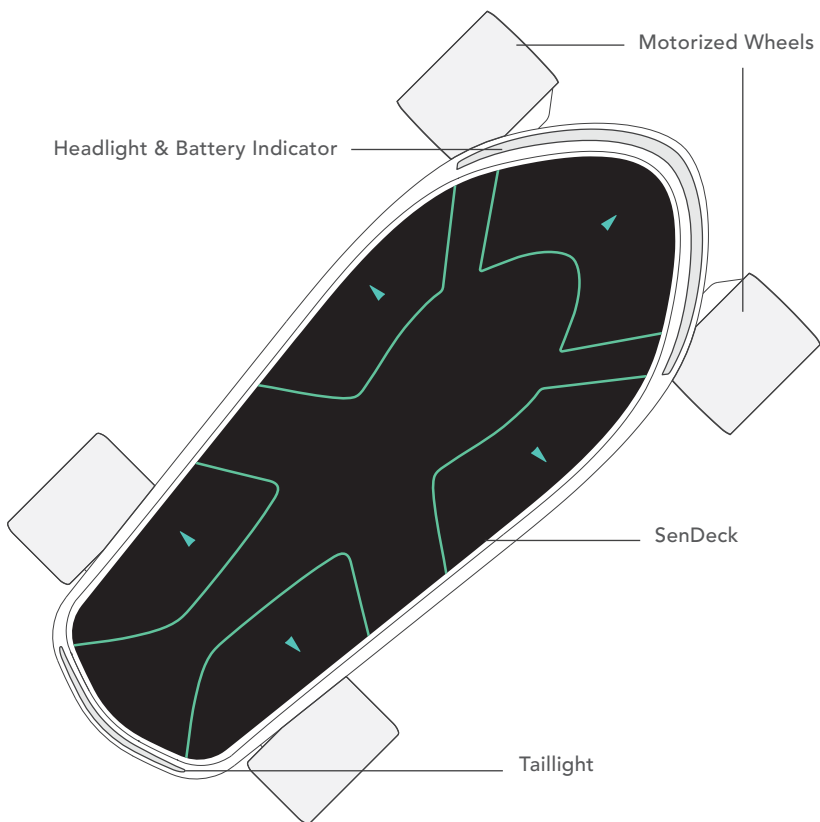
SWAGBOARD®
ELECTRIC SKATEBOARD

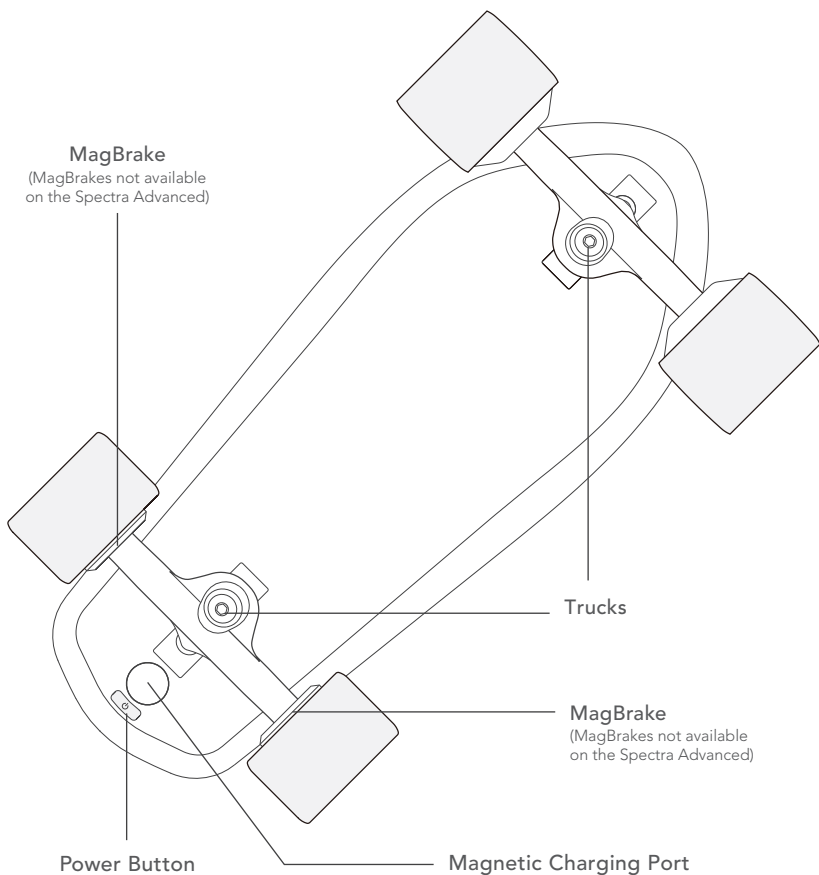
SPECTRA

Quick Start Guide

Meet the Spectra

Follow along with this guide to get to know your board better. Let's roll!





01 Download the App

- Search for **eBoard GO** in the App or Play Store and install the app.
- Turn on your phone's Bluetooth function then sign up or log into the app with your account.
- Connect to your board via the app. For help, visit our website or contact customer service.



02 Check the Battery Level

Press and hold the Power Button for two seconds to turn the board on. The Headlight will turn on and the board will emit a beeping sound.

- Check the Headlight color to see battery life.
- Check the app to see the precise battery life and remaining ride time.



Blue/Green (100% ~ 20%)
Yellow (20% ~ 5%),
Red (5% ~ 1%).

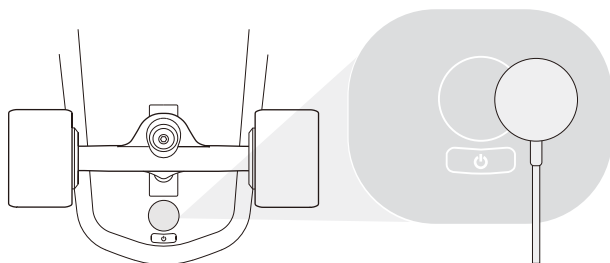


100%



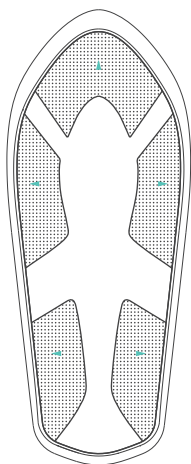
80 Min

03 Charge the Board



Plug the charger into a power source and connect the end to the magnetic charging port. The charger's light turns red during charging. It will turn green to indicate a full charge.

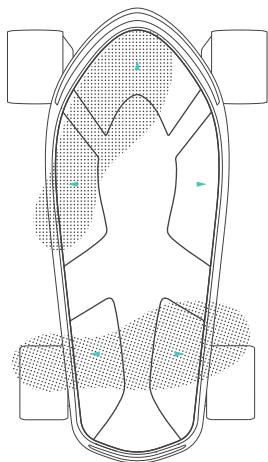
04 Learn About the SenDeck



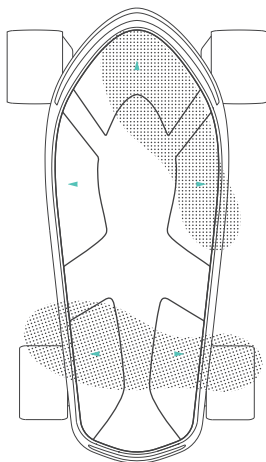
SENSORS

Five sensor modules are built into the board's deck, giving it its namesake, the SenDeck.

To activate the modules, step on the part of the sensors with the arrows.



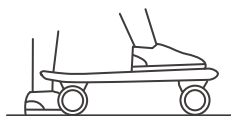
Left Foot Forward



Right Foot Forward

The Spectra is compatible with different stances. Ride the way you want!

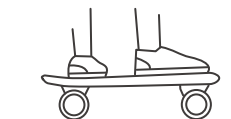
05 Ride Spectra



1. Step On

First, check section 04 for standing postures. Step on the deck with your front foot then step on with your rear foot.

Alarm Beeping Pattern: ●



2. Stand Up Straight

Keep your body relatively straight with your knees slightly bent. Try to maintain balance and keep the deck level.

Alarm Beeping Pattern: ● ●



3. Move Forward

Lean your body slightly forward. The Spectra will speed up gradually.



4. Lean to Make Turns

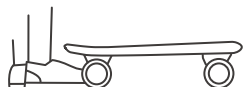
To turn left/right, lean your body left/right and press your rear foot on the left/right rear sensor. Tilt the deck to steer more easily.



5. Slow Down & Brake

Lean your body slightly backwards to slow to a stop. Lift your front toe to further reduce acceleration and slow down more quickly.

Alarm Beeping Pattern: ● ● ● ● ● ● ● ●



6. Step Off to Stop Instantly

Jump off the side of the board or rapidly tap with your rear foot to slow down and stop quickly.

Alarm Beeping Pattern:

Note: Exercise caution when jumping off the board. Do not do this if you are not familiar with this maneuver.

06 Specifications

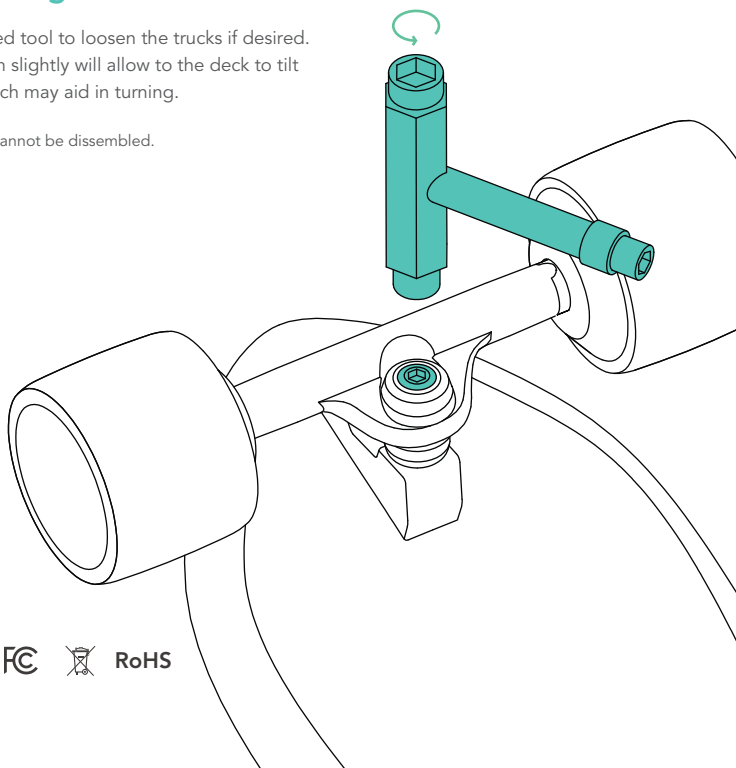
Mode	Pro	Advanced
Size	19.4 x 11.1 x 5.3 in	19.4 x 11.1 x 5.3 in
Weight	12 lbs	11 lbs
Motor	200 W x 2	200 W x 2
Range*	12.4 miles	12.4 miles
Max. Speed*	15.5 mph	15.5 mph
Max. Slope*	15° uphill, 5° downhill	15° uphill, 5° downhill
Battery	22.2 V, 4000 mAh, 88.8 Wh	22.2 V, 4000 mAh, 88.8 Wh
Recharging Time	Approx. 90~120 min.	Approx. 90~120 min.
MagBrake	Yes	No
Max. Load	187.4 lbs	187.4 lbs

*Actual Range, Max. Speed and Max. Slope may vary depending on load bearing, ambient temperature, road conditions and other environmental factors.

07 Adjusting the Trucks

Use the provided tool to loosen the trucks if desired. Loosening them slightly will allow to the deck to tilt more easily which may aid in turning.

Note: The trucks cannot be dissembled.



SWAGBOARD®

Copyright © 2017 SWAGTRON All rights reserved.

*Google Play and the Google Play logo are trademarks of Google Inc.

*Apple and the Apple logo are trademarks of Apple Inc., registered in the U.S. and other countries. App Store is a service mark of Apple Inc., registered in the U.S. and other countries.